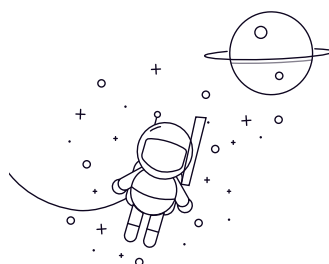


## 3200 Series



select Inquiry	Bearing No.	Boundary dimensions □mm□					rs min	Basic load ratings(kN)		Limiting speed(rpm Mass )	
		d	D	B	Dynamic(Cr)	Static(Cor)		Grease	Oil	Kg	
3200	10	30	14.3	0.6	8.4	6.5	14000	19000	0.05l		
3201	12	32	15.9	0.6	8.45	6.7	13000	17000	0.06		
3202	15	35	15.9	0.6	11.1	9.05	11000	15000	0.069		
3203	17	40	17.5	0.6	14.2	11.8	9900	13000	0.099		
3204	20	47	20.6	1	17.5	15.2	8800	12000	0.166		
3205	25	52	20.6	1	19.3	18.4	7300	9800	0.183		
3206	30	62	23.8	1	27.7	27.4	6300	8400	0.303		
3207	35	72	27	1.1	37.5	38	5500	7400	0.458		
3208	40	80	30.2	1.1	40.5	45	4900	6600	0.627		
3209	45	85	30.2	1.1	46.5	52	4400	5900	0.678		
3210	50	90	30.2	1.5	52.5	60	4000	5300	0.698		
3211	55	100	33.3	1.5	66	76.5	3600	4900	1.07		
3212	60	110	36.5	1.5	70.5	88	3400	4500	1.34		
3213	65	120	38.1	1.5	78	99	3100	4200	1.68		
3214	70	125	39.7	1.5	86	110	2900	3900	1.84		
3215	75	130	41.3	1.5	94	122	2700	3600	2		
3216	80	140	44.4	2	104	131	2500	3400	2.71		
3217	85	150	49.2	2	121	155	2400	3200	3.48		
3218	90	160	52.4	2	135	170	2200	3000	4.24		
3219	95	170	55.6	2.1	144	184	2100	2800	5.1		

3200 Series

---

3220	100	180	60.3	2.1	189	234	2000	2700	5.88
------	-----	-----	------	-----	-----	-----	------	------	------