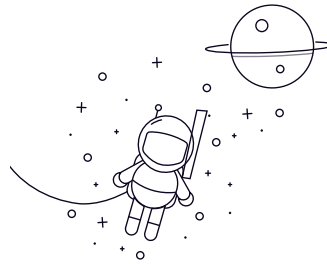


7400C Series



| select | Inquiry | Bearing No. | Boundary dimensions [mm] | | | Basic load ratings(kN) | | Limiting speed(rpm) Grease Oil | Mass Kg |
|--------|---------|-------------|-----------------------------|-------|-------|------------------------|-------------|------------------------------------|------------|
| | | | d | D | B | Dynamic(Cr) | Static(Cor) | | |
| 7406C | 30 | 90 | 23 | 57.5 | 33.8 | 6500 | 8500 | 0.96 | |
| 7407C | 35 | 100 | 25 | 66.8 | 41.2 | 5500 | 8000 | 1.14 | |
| 7408C | 40 | 110 | 27 | 80.2 | 53.3 | 5200 | 7000 | 1.4 | |
| 7409C | 45 | 120 | 29 | 93.1 | 60.8 | 5000 | 6500 | 1.8 | |
| 7410C | 50 | 130 | 31 | 119.3 | 81 | 4500 | 6000 | 2.25 | |
| 7411C | 55 | 140 | 33 | 125.3 | 87 | 4200 | 5600 | 2.75 | |
| 7412C | 60 | 150 | 35 | 136.3 | 98.2 | 3800 | 5200 | 3.4 | |
| 7413C | 65 | 160 | 37 | 147.4 | 110.2 | 3400 | 4800 | 4.2 | |
| 7414C | 70 | 180 | 42 | 160.4 | 126.6 | 3200 | 4500 | 5.8 | |
| 7415C | 75 | 190 | 45 | 171.4 | 138.9 | 3000 | 4200 | 7 | |
| 7416C | 80 | 200 | 48 | 183.2 | 152.9 | 2800 | 4000 | 8.4 | |
| 7417C | 85 | 210 | 52 | 195.1 | 167.6 | 2600 | 3700 | 9.6 | |
| 7418C | 90 | 225 | 54 | 208 | 184.2 | 2400 | 3400 | 11.2 | |