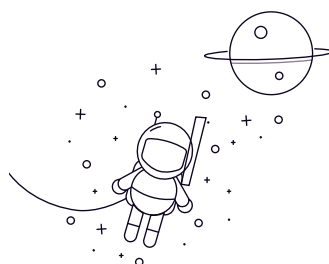


## 7300C Series



select	Inquiry	Bearing No.	Boundary dimensions [mm]			Basic load ratings(kN)		Limiting speed(rpm)	Mass Kg
			d	D	B	Dynamic(Cr)	Static(Cor)	Grease Oil	
7300C	10	35	11	9.8	4.6	18000	26000	0.053	
7301C	12	37	12	11.8	5.6	17000	24000	0.06	
7302C	15	42	13	13.2	6.7	15000	21000	0.084	
7303C	17	47	14	15.7	8.2	13000	19000	0.16	
7304C	20	52	15	18.4	9.8	12000	17000	0.15	
7305C	25	62	17	27.8	15.9	9500	14000	0.23	
7306C	30	72	19	33.2	21.2	8500	12000	0.35	
7307C	35	80	21	40.3	25.8	7500	10000	0.47	
7308C	40	90	23	49.3	32.3	6700	9000	0.66	
7309C	45	100	25	63.1	42.9	6000	8000	0.86	
7310C	50	110	27	74.9	50.9	5600	7500	1.08	
7311C	55	120	29	86.4	59.5	5000	6700	1.42	
7312C	60	130	31	98.6	68.5	4800	6300	1.71	
7313C	65	140	33	113.1	79.6	4300	5600	2.23	
7314C	70	150	35	126	91.6	4000	5300	2.67	
7315C	75	160	37	140.7	103.9	3800	5000	3.1	
7316C	80	170	39	156.1	112.2	3600	4800	3.6	
7317C	85	180	41	160.7	130.5	3400	4500	4.38	
7318C	90	190	43	184.9	159.9	3200	4300	5.6	
7319C	95	200	45	201.1	179.8	3200	4200	6.6	

7300C Series

7320C	100	215	47	222.1	206.7	3000	4000	7.58
7321C	105	225	49	235.8	225.6	2800	3800	8.85
7322C	110	240	50	263.2	261.9	2600	3600	10.5