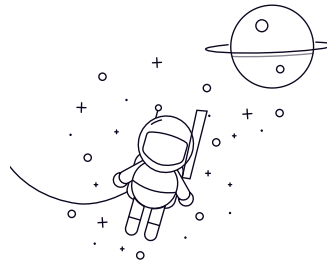


## 7000C Series



select	Inquiry	Bearing No.	Boundary dimensions			Basic load ratings(kN)		Limiting speed(rpm )	Mass Kg
			[mm]			Dynamic(Cr)	Static(Cor)		
			d	D	B		Grease	Oil	
7000C	10	26	8	4.9	2.1	24000	32000	0.019	
7001C	12	28	8	5.4	2.6	22000	28000	0.021	
7002C	15	32	9	6.2	3.3	19000	25000	0.03	
7003C	17	35	10	6.6	3.6	16000	22000	0.04	
7004C	20	42	12	10.4	6	14000	19000	0.064	
7005C	25	47	12	11.6	7.4	12000	17000	0.074	
7006C	30	55	13	15.1	10.2	9500	14000	0.11	
7007C	35	62	14	18.2	12.7	8500	12000	0.15	
7008C	40	68	15	19.7	14.9	8000	11000	0.18	
7009C	45	75	16	25.9	20.2	7500	10000	0.23	
7010C	50	80	16	26.6	21.8	6700	9000	0.25	
7011C	55	90	18	38.9	29.5	6000	8000	0.38	
7012C	60	95	18	40.9	33.1	5600	7500	0.4	
7013C	65	100	18	40.1	35.3	5300	7000	0.43	
7014C	70	110	20	48.3	43.1	5000	6700	0.6	
7015C	75	115	20	49.6	45.9	4800	6300	0.63	
7016C	80	125	22	58.9	54.7	4500	6000	0.85	
7017C	85	130	22	58.1	55.9	4300	5600	0.89	
7018C	90	140	24	71.7	68.7	4000	5300	1.15	
7019C	95	145	24	73.5	73.1	3800	5000	1.2	
7020C	100	150	24	74.4	72.5	3800	5000	1.25	

## 7000C Series

7021C	105	160	26	80.6	81.1	3600	4800	1.6
7022C	110	170	28	101.4	100.3	3400	4600	1.95
7024C	120	180	28	108.6	110.7	2800	3800	2.1
7026C	130	200	33	129.4	134.7	2600	3400	3.33
7028C	140	210	33	153.4	160.5	2400	3200	3.46
7030C	150	225	35	183.9	194.2	2200	3000	4.8
7032C	160	240	38	200.1	219.4	2000	2800	5.26